



# AX SERIES FUEL CELL HUMIDIFIERS

FOR AUTOMOTIVE AND MOBILE APPLICATIONS

## PRODUCT DESCRIPTION

The Ax Series humidifier is a planar membrane humidifier designed for high-power, high-temperature, higher-pressure motive power applications requiring a compact design without sacrificing performance. It is a fully passive device – with no moving parts and requiring no external power supply.

## ADVANTAGES

- Scalable designs for 10 to 110 kW fuel cell systems
- Compact crossflow membrane cartridge
- Excellent performance to volume ratio
- Low pressure drop
- Configurable and customizable housing & porting
- Freeze tolerant membrane and self-draining design allows for cold-start operation



1455 East Georgia St.  
Vancouver, BC, V5L 2A9,  
Canada

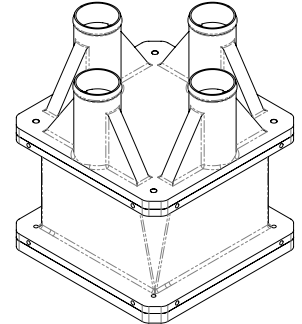
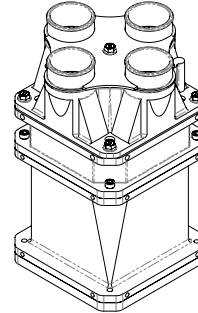
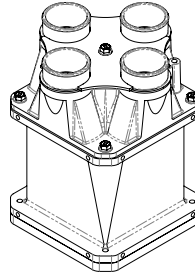
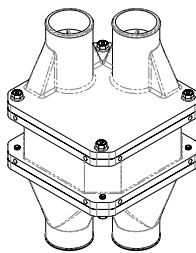
+1 604 488 1132  
sales@dpoint.ca  
www.dpoint.ca



# AX SERIES FUEL CELL HUMIDIFIERS

Parameter	Ax100-65	Ax100-135	Ax100-187	Ax150-135
Power Range	10 - 20kW	15 - 30kW	20 - 40kW	50 - 100 kW
Flow Range (sLPM)	300 - 1200	500 - 2000	500 - 3000	1000 - 5000+
Dew Point Approach Temperature Range (°C)*	5 - 20	7-20	5 - 20	7 - 20
Dry Side Pressure Drop Range (kPa)	0.7 - 3.5	0.5 - 2.7	0.3 - 3.0	1.2 - 6.8
Wet Side Pressure Drop Range (kPa)	0.7 - 5.0	0.5 - 4.0	0.3 - 4.0	1.5 - 10.6
Pressure limit (kPa)	200 kPa,g	200 kPa,g	200 kPa,g	200 kPa,g
Temperature limit (°C)**	85 to 110	85 to 110	85 to 110	85 to 110
Port Connection	50mm hose barb	50mm hose barb	50mm hose barb	50mm hose barb
Volume with housing (L)	4.1	5.9	7.2	13.2
Dimensions [H x W x L]	16x 16 x 16 cm	23 x 16 x 16 cm	28 x 16 x 16 cm	25 x 23 x 23 cm
Weight (kg)	3.0	4.2	5.6	8.4

Standard External Housing Geometry\*\*\*



\* Dependent on operating conditions (contact us to run our performance model at your specific conditions)

\*\* Membrane dependent

\*\*\* Contact us to discuss custom housings designs to package and interface with your system

### Ax100 and Ax150 Performance

